



**ELECTRICAL
SUPPLY CORP**

PRODUCT CATALOGUE



EZYDUCT®

The Ezyduct system has been designed by a
tradesman for tradesman to make installations
easier, faster & more attractive



**ELECTRICAL
SUPPLY CORP**

ABOUT US

ESC proudly presents Ezyduct - the air conditioning ducting system designed by a tradesman, for the tradesperson. Manufactured from superior quality raw materials and engineered with exceptional strength, toughness, resistance to UV radiation and colour fading, Ezyduct delivers unmatched performance, all supported by a comprehensive 5-year warranty.

Ezyduct is specifically designed to assist HVAC installers overcome the challenges and limitations of conventional ducting systems. Ezyduct features a range of innovative design elements, including increased carrying capacity, a bend with a larger radius that clips together, a single-piece wall cap with extra interior space for copper pipes, and exceptional durability that ensures no cracking or shattering.

Ezyduct doesn't just transform the installation process; it elevates it with enhanced time and cost efficiency, superior quality outcomes, and an impressive reduction in errors and frustrations. Experience the transformation in air conditioning ducting innovation with Ezyduct. Order today to elevate your game and enhance your installations to the highest professional standards.



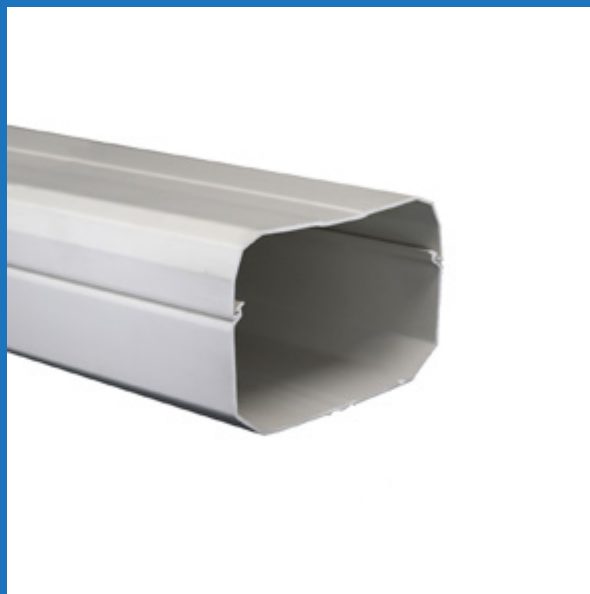
Notes:

CABLE & PIPE DUCT

Extruded UPVC duct is designed to carry and protect your cable and pipe. With a clip on lid, the duct is easy to install.

Utilises the highest quality alloyed materials with added UV-resistant polymers for outstanding protection.

* 5 year performance warranty



INSTALLATIONS



CABLE & PIPE DUCT

CODE	SIZE (mm)	CARTON SIZE (mm)	BOX QTY	WEIGHT
ACECD80	80 x 66h x 2000	260 x 2030 x 100	10	13 kg
ACECD110	110 x 76h x 2000	260 x 2040 x 130	8	15 kg



WALL CAP

Injection moulded plastic cap to cover wall penetrations.

Utilises the highest quality alloyed materials with added UV-resistant polymers for outstanding protection.

* 5 year performance warranty



INSTALLATIONS



WALL CAP

CODE	SIZE (mm)	CARTON SIZE (mm)	BOX QTY	WEIGHT
ACEWC80	80	430 x 550 x 170	20	3 kg
ACEWC110	110	425 x 535 x 180	20	4 kg



Notes:

BEND

Injection moulded plastic bend designed with the optimum radius and space to allow copper pipe to be bent without kinking.

Utilises the highest quality alloyed materials with added UV-resistant polymers for outstanding protection.

* 5 year performance warranty



INSTALLATIONS



BEND

CODE	SIZE (mm)	CARTON SIZE (mm)	BOX QTY	WEIGHT
ACEB80	80	190 x 610 x 160	20	3 kg
ACEB110	110	225 x 400 x 160	10	3 kg



ELBOW

Injection moulded plastic elbow to carry pipe & cable along inside corners and around outside corners. One fitting for two applications.

Utilises the highest quality alloyed materials with added UV-resistant polymers for outstanding protection.

* 5 year performance warranty



INSTALLATIONS



ELBOW

CODE	SIZE (mm)	CARTON SIZE (mm)	BOX QTY	WEIGHT
ACEE80	80	370 x 435 x 130	10	2 kg
ACEE110	110	400 x 590 x 140	10	3 kg



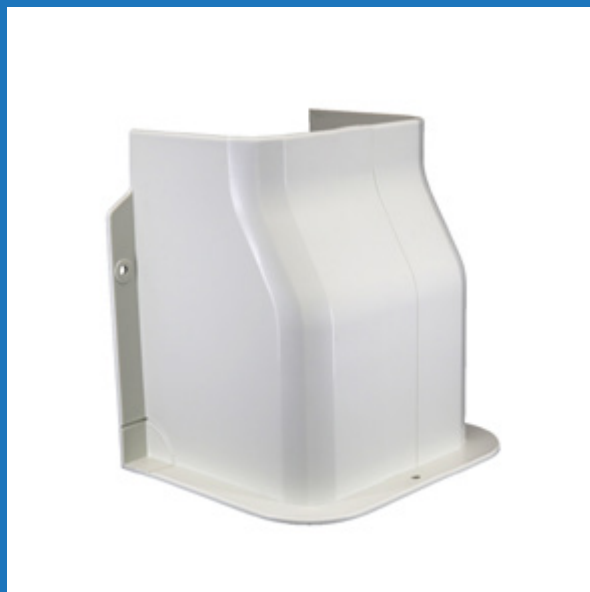
Notes:

CEILING CAP

Injection moulded plastic cap to cover penetrations through ceilings, eaves and walls.

Utilises the highest quality alloyed materials with added UV-resistant polymers for outstanding protection.

* 5 year performance warranty



INSTALLATIONS



CEILING CAP

CODE	SIZE (mm)	CARTON SIZE (mm)	BOX QTY	WEIGHT
ACECC80	80	355 x 600 x 170	15	3 kg
ACECC110	110	360 x 740 x 170	15	3 kg



JOINER

Injection moulded plastic clip-on fitting to cover the join between two lengths of duct. The joiner can be glued onto the duct for stronger bonding.

Utilises the highest quality alloyed materials with added UV-resistant polymers for outstanding protection.

* 5 year performance warranty



INSTALLATIONS



JOINER

CODE	SIZE (mm)	CARTON SIZE (mm)	BOX QTY	WEIGHT
ACEJ80	80	390 x 210 x 50	20	0.5 kg
ACEJ110	110	440 x 260 x 60	20	0.5 kg



Notes:

T JOINT

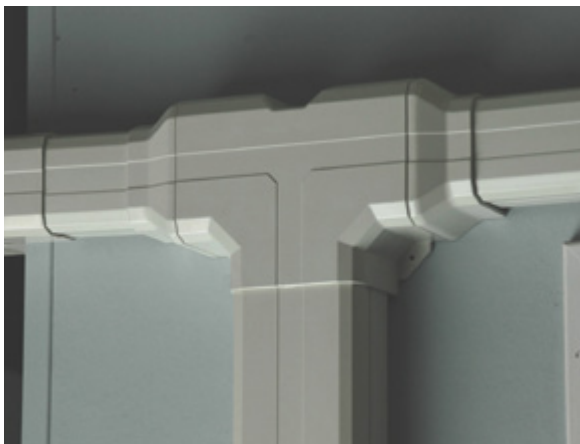
Injection moulded plastic T Joint to branch off 110mm duct lines.

Utilises the highest quality alloyed materials with added UV-resistant polymers for outstanding protection.

* 5 year performance warranty



INSTALLATIONS



T JOINT

CODE	SIZE (mm)	CARTON SIZE (mm)	BOX QTY	WEIGHT
ACETJ110	110	420 x 210 x 180	5	1.3 kg



REDUCER (T JOINT)

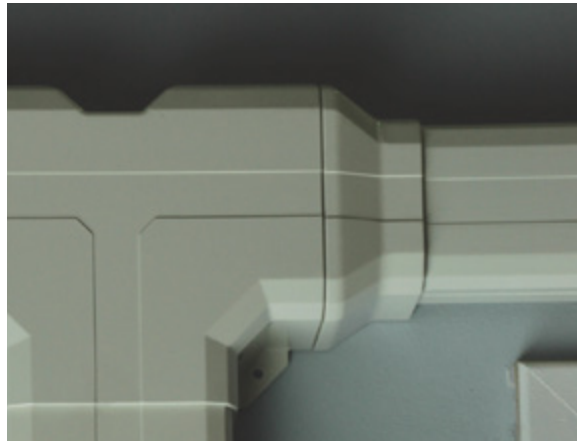
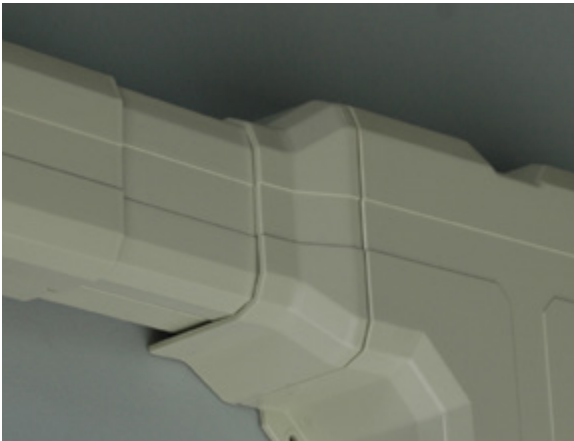
Injection moulded plastic reducer fits into T Joint to reduce size from 110mm to 80mm.

Utilises the highest quality alloyed materials with added UV-resistant polymers for outstanding protection.

* 5 year performance warranty



INSTALLATIONS



REDUCER

CODE	SIZE (mm)	CARTON SIZE (mm)	BOX QTY	WEIGHT
ACER11080	110 > 80	250 x 280 x 100	10	0.8 kg



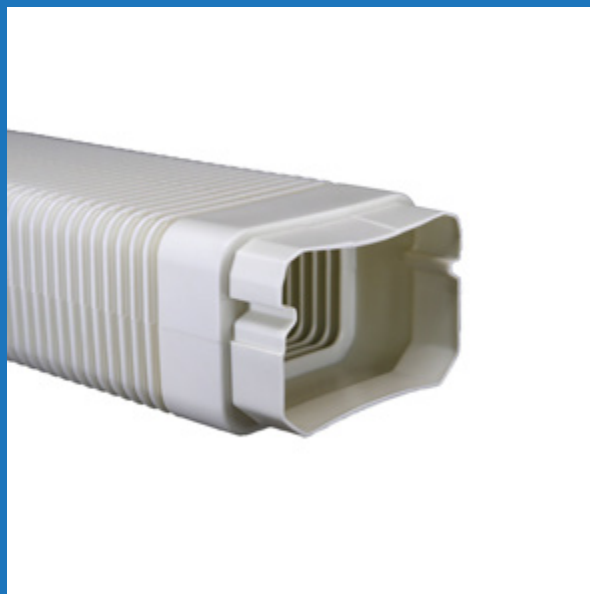
Notes:

FLEXIBLE JOINER

Blow moulded polyethylene fitting designed for easy bending over and around difficult applications.

Utilises the highest quality alloyed materials with added UV-resistant polymers for outstanding protection.

* 5 year performance warranty



INSTALLATIONS



FLEXIBLE JOINER

CODE	SIZE (mm)	CARTON SIZE (mm)	BOX QTY	WEIGHT
ACEFJ80	80 x 650	675 x 440 x 165	10	2 kg
ACEFJ110	110 x 650	675 x 460 x 160	8	3.3 kg

EZYSLAB®

The Ezyslab® is an innovative blow moulded equipment support base that allows for fast and easy installations. The underneath side of the Ezyslab is solid but profiled which provides greater rigidity, eliminating sagging and maximising stability. It is light weight and extremely weather resistant.

Utilises the highest quality alloyed materials with added UV-resistant polymers for outstanding protection.

* 5 year performance warranty



INSTALLATIONS



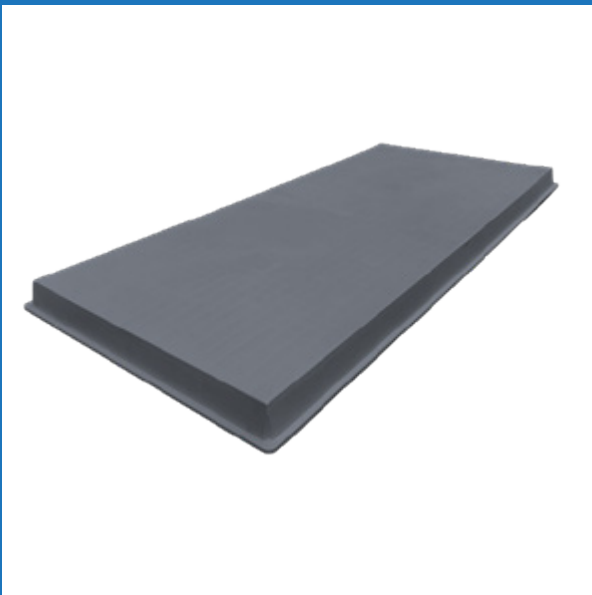
CODE	SIZE (mm)	WEIGHT
ACESBL	930 x 480 x 50	2.5 kg



Notes:

EZYSLAB

The Ezyslab® V2 is an innovative injection moulded equipment support base that allows for fast and easy installations. The underneath side of the Ezyslab is profiled which provides greater rigidity, eliminating sagging and maximising stability. It is light weight and extremely weather resistant. The Ezyslab utilises the highest quality alloyed materials, with added UV-resistant polymers and glass fibre reinforced material, for outstanding protection and strength.



INSTALLATIONS



CODE	SIZE (mm)	CARTON SIZE (mm)	MIN. ORDER	WEIGHT
ACESLAB	1020 x 475 x 43	1020 x 475 x 205	5	3.1kg/16.5kg



CONDENSER MOUNT

ACECM500

90mm x 145mm x 500mm
240kg capacity per set of 2
10 per box (5 pairs)



PITCH BRACKET

ACPP18 420 x 225 x
780mm 150kg capacity
Pitch: 8° - 38°
8 sets per box

ACPP24 500 x 250 x
800mm 150kg capacity
Pitch: 8° - 38°
8 sets per box



RUBBER VIBRATION MOUNTS - 75MM

ACPRM75

47mm x 75mm x 108mm
50kg capacity per mount
200kg capacity per 4
48 per box
4 per set



FLEXIBLE DRAIN PIPE

ACFDP16 16mm 16mm x
50m roll per box

